

# TheNID™ - Splice

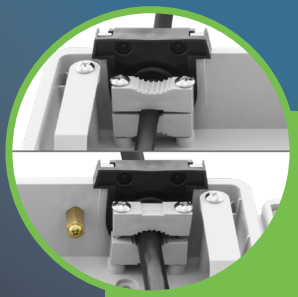
## Fiber Entry Terminal (FET)



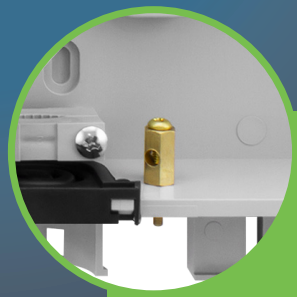
P/N: FPP-TN-A-86



Large Rubber Grommets Entry for up to 1 inch Conduit



Variable Cable Entry Clamp Designed for Round or Flat Drop Cable



Copper Ground Lug Included



Splice up to 2 single fibers or 1 mass fusion

### Specifications

#### Construction:

- Fiber Entry Terminal (FET) made of high-impact thermoplastic material designed for harsh outdoor environments
- Holds 1 simplex SC, 1 duplex LC or 1 MTP adapter (can splice up to 2 single fibers or 1 mass fusion)
- Slack storage for up to 50 feet of fiber
- Cover closes securely with 3/8" hex bolt with provision for a security seal
- Color: Light Gray
- Up to 1-inch Conduit entry point with tie down

- Variable cable entry clamp designed for round or flat drop cable  
Round OD: 3mm to 16.2mm,  
Flat cable OD: 2mm to 8.1 x 4.5mm

#### Included Hardware:

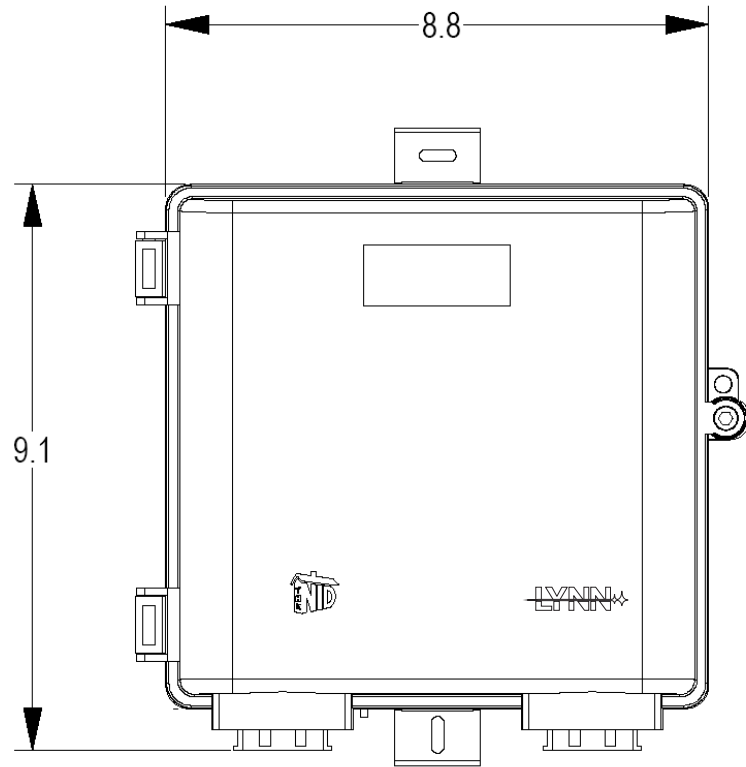
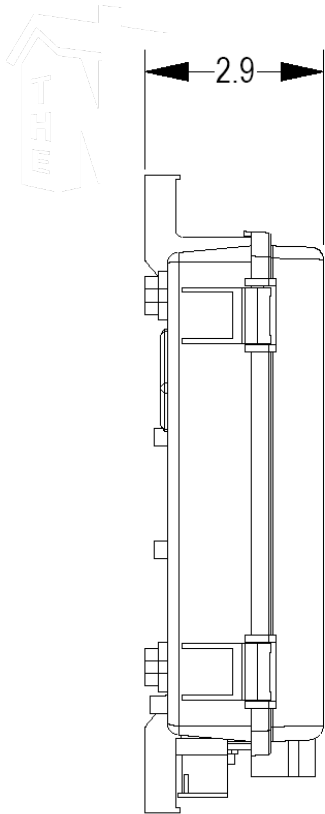
- (2) 40mm splice sleeves, (1) 40mm mass splice sleeve
- (1) 1/2" Velcro strip
- (4) 4-inch zip ties
- (2) 6-inch zip ties
- (4) M4 x 50mm screws and anchors
- (1) electrical ground contact
- (1) SC APC adapter
- Available preloaded with (1) simplex SC (SC APC included), (1) duplex LC, or (1) 12-fiber MPO adapter and corresponding pigtails

### Industry Standards

- Designed to GR-771

# TheNID™ - Splice

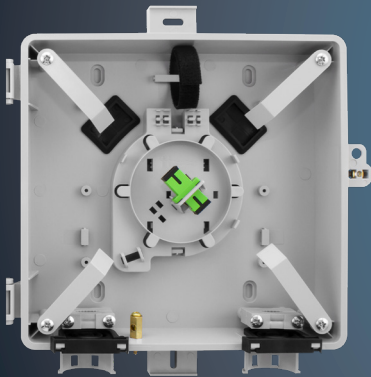
Fiber Entry Terminal (FET)



Dimensions are in inches

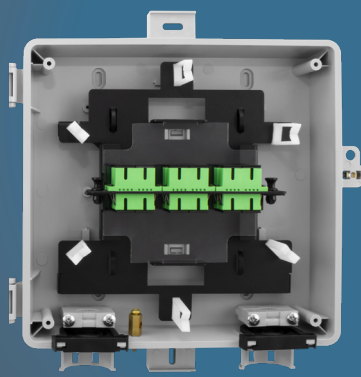
## AVAILABLE OPTIONS for TheNID

Splice



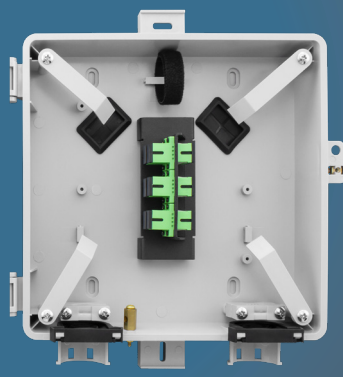
FPP-TN-A-86

LGX



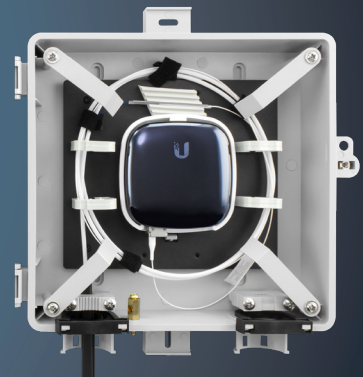
FPP-TN-E-85

Patch



FPP-TN-L-88

ONT



FPP-TN-M-93