

# TheNID™ - LGX

Fiber Entry Terminal (FET)



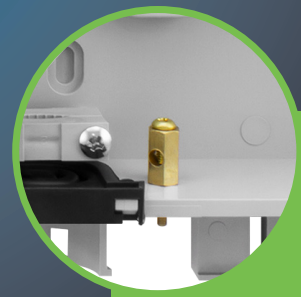
P/N: FPP-TN-E-85



Large Rubber Grommets Entry for up to 1 inch Conduit



Variable Cable Entry Clamp Designed for Round or Flat Drop Cable



Copper Ground Lug Included

## Specifications

### Construction:

- Fiber Entry Terminal (FET) made of high-impact thermoplastic material designed for harsh outdoor environments
- Holds 1 LGX Adapter plate (can splice up to 12 single fibers)
- Color: Light Gray
- Up to 1-inch Conduit entry point with tie down
- Variable cable entry clamp designed for round or flat drop cable
  - Round OD: 3mm to 16.2mm,
  - Flat cable OD: 2mm to 8.1 x 4.5mm

### Included Hardware:

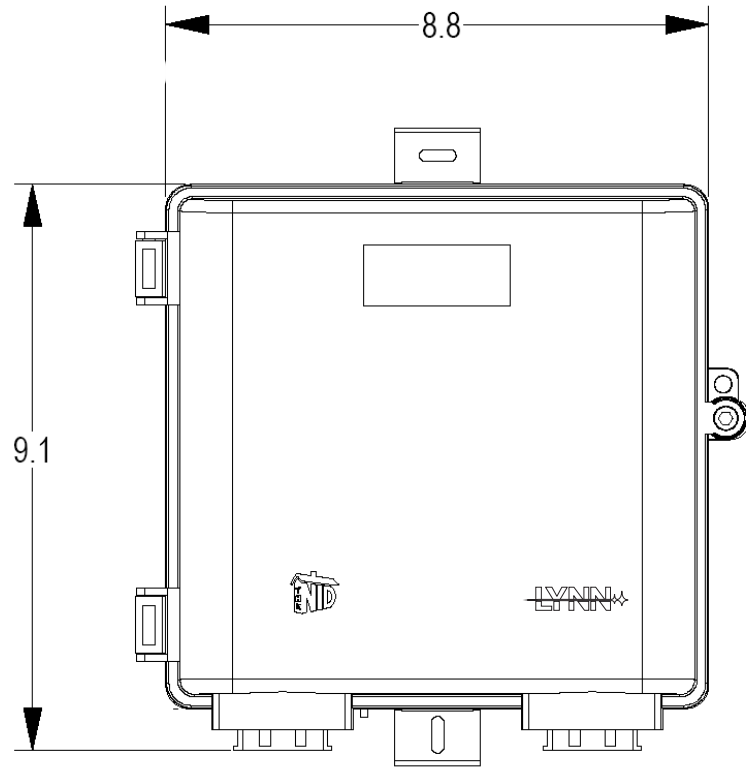
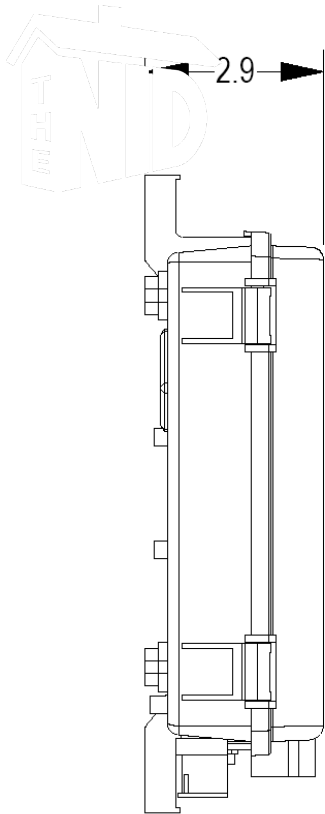
- (12) 40mm splice sleeves, (1) 40mm mass splice sleeve
- (1) ½ Velcro strip
- (4) 4-inch zip ties
- (1) Splice chip (12-fiber)
- (4) M4 x 50mm screws and anchors
- (1) electrical ground contact
- Available preloaded with (1) LGX adapter plate, (6) SC, (6) duplex LC, or (6) 12-fiber MPO adapters and corresponding pigtails

## Industry Standards

- Designed to GR-771

# TheNID™ - LGX

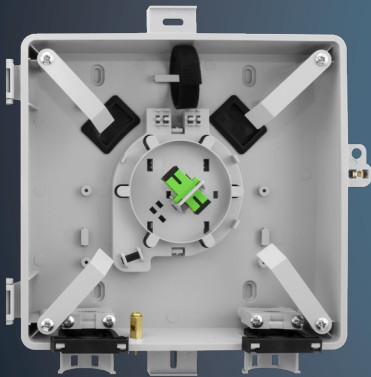
Fiber Entry Terminal (FET)



Dimensions are in inches

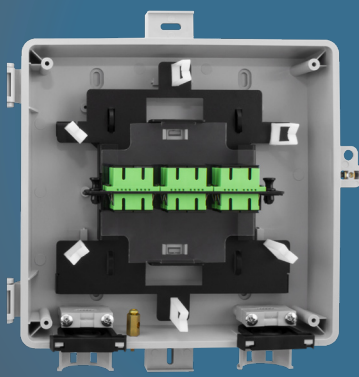
## AVAILABLE OPTIONS for TheNID

Splice



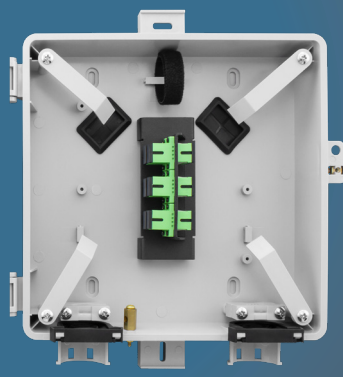
FPP-TN-A-86

LGX



FPP-TN-E-85

Patch



FPP-TN-L-88

ONT



FPP-TN-M-93