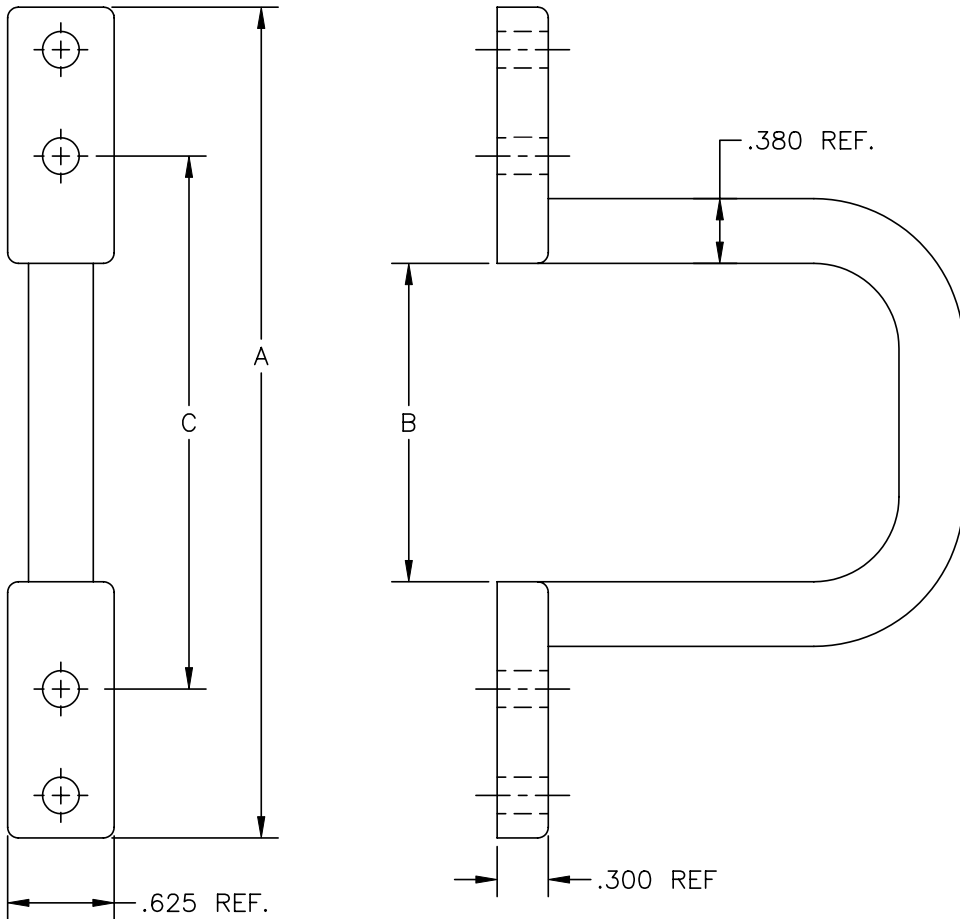




TOTAL CABLE SOLUTIONS



PART NO.	A REF.	B REF.	C REF.	D REF.
	DIMENSIONS (INCHES)			
DSTR-2	4.88	1.87	3.13	2.74
DSTR-3	6.12	3.11	4.39	3.74
DSTR-5	8.12	5.12	6.38	3.74

SPECIFICATIONS

1. MATERIAL: DIE CAST ALUMINUM ALLOY
2. FINISH: NONE

DESIGNED:			SYM.	DATE:	DESCRIPTION OF REVISIONS:	DRAWN	APPD.
DRAWN:	CWH	05/13/15	▲	02.28.11	NEW	MAW	JF
CHECKED:	TWH	05/13/15	▲	.			
APPROVED:	CWH	05/13/15	▲	.			

3RD ANGLE UNIT: inches SCALE: 1:1 REV. A

	TOLERANCE:	PART NO: SEE CHART
	TO 1 DECIMAL PLACE: ±	TITLE: DISTRIBUTION RING
	TO 2 DECIMAL PLACES: ±	
	AS ANGLES: ± °	
SHEET:	1 OF 1	